

ECO SAVER PN- 220

■ ADVANTAGES OF ELECTRONIC GAS SAVER

■ FEATURES

* Pilot Flame *

The adjustment of a flame size can be done by a valve control.

* Operating efficiency *

Ignition is controlled quite surely.
Attache or remove of a torch is very easy.
Valve adjustment valve of a torch is set at the first time only and it is kept on continuously.

* Energy saving *

A pilot flame is ignited for only 5 seconds and then is stopped.
A torch flame is intercepted automatically just only hanging a torch on a lever during not operating.

* Safety *

A torch flame is smoothly extinguished only hanging a torch on a lever.
A pilot flame also does not appear during operating except 5 seconds ignition.
Even if the torch is coming off from the lever accidentally a torch flame is intercepted automatically.



SPECIFICATIONS

Model	ECO SAVER PN-220
Ignition Method	Spark Ignition
Flame Detection	Flame Sensor
Flammable Gas	Acetyline ,Methene,LPG,Butane,LNG
Supporting Gas	Oxygen-Air
Connecting Method	Hose Jont Flared Nut (M16X1,5)
Rating Voltage	110/220/230 VAC
Gas Control	Solenoid Valve
Frequency	50/60 Hz
Full Load Electric Power	10 W
Control Circuit Voltage	5 VDC
Outer Dimension	120W X 128D X 485H
Weight	4.4 kg

PRODUCT NUMBER

Eco Saver PN-210



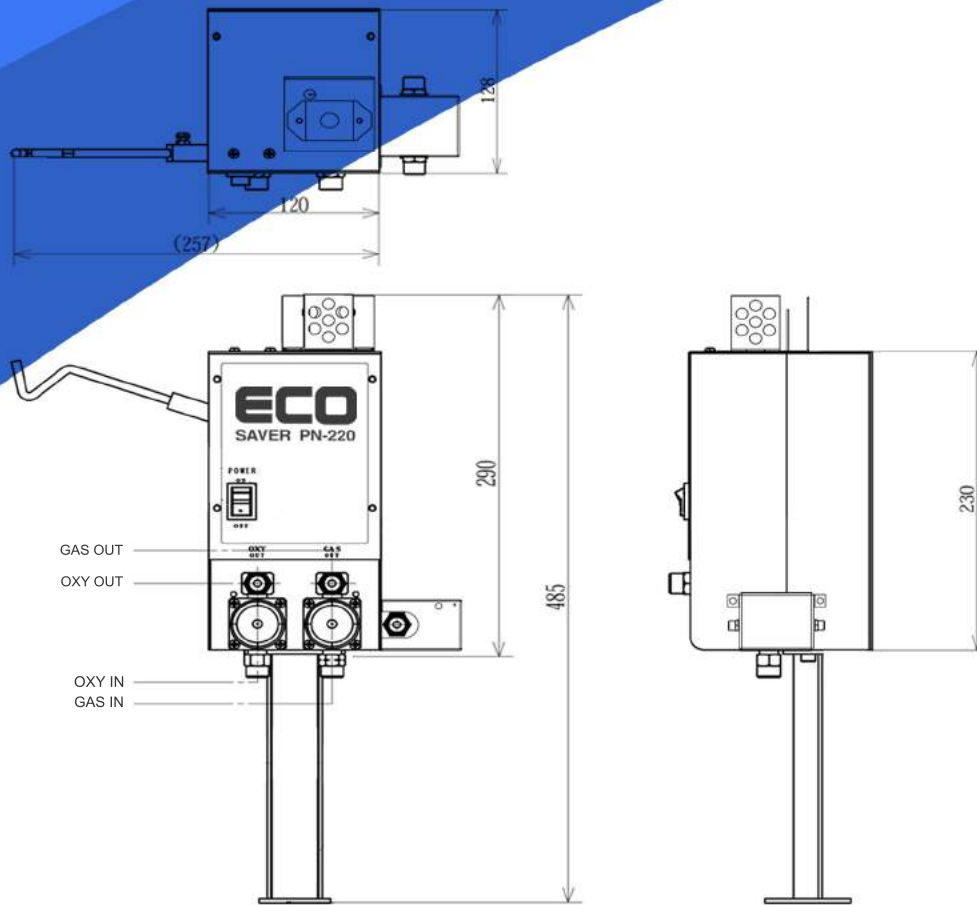
* Power supply 110 VAC *

Eco Saver PN-220

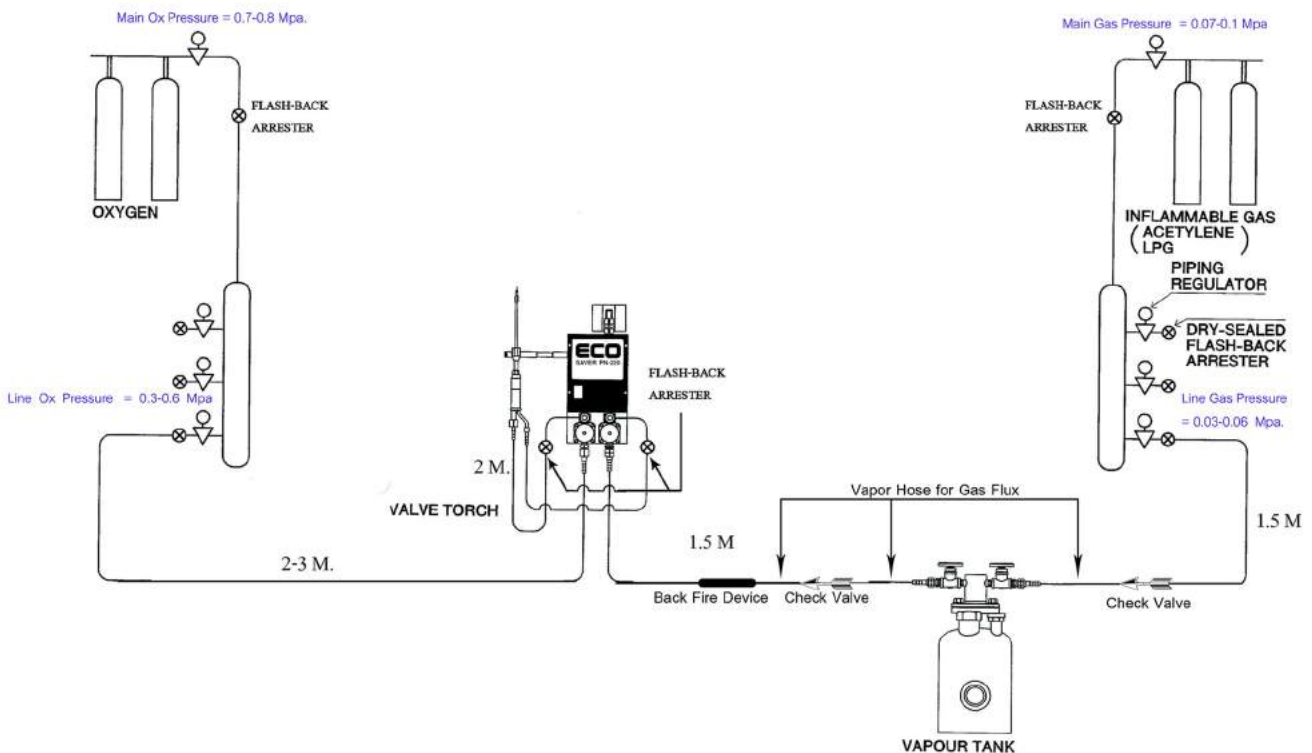


* Power supply 220 VAC *

SPECIFICATIONS



CONNECTING FIGURE BRAZING EQUIPMENT



Comparison of gas consumption

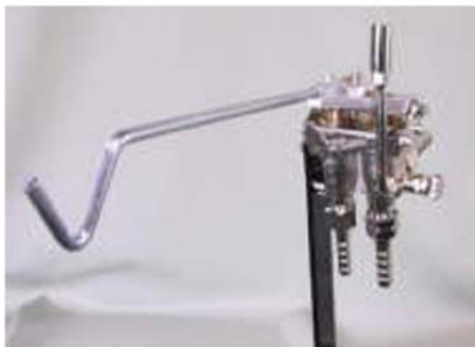
Between: Gas saver Diaphragm type & Eco Saver PN-220

Gas Saver Model	Standard	Eco Saver PN-220
Gas Control System	Diaphragm	Solenoid Valve
Gas Flow Control System	N/A	N/A
Ignition	Spark rod	Pilot flame
Flame Detection	N/A	Flame Sensor rod
Flammable Gas	Acetylene,LPG	Acetylene,LPG,LNG
Gas Connection	Oxygen:M16x1.5 right (With D=8 mm. Hose Nipple)	
	Flammable Gas(Ember Gas):M16x1.5 left (With D=9 MM. HOSE NIPPLE)	
Pressure Resistant	-	Max 0.7 Mpa (Oxygen)
	-	Max 0.4 Mpa (Flamable gas)
Weight	Approx 2.5 Kg.	Approx 4 kg.
Optional	Flash back unit	N ₂ control unit
		Mixer control unit
		Flash back unit
Power supply	N/A	220VAC

STANDARD AND ECO SAVER PN-220 COMPARE

Pilot flame gas	0.7 L/min.	N/A
Pilot flame gas Cost.(8/H/day.)	37.6 THB.	N/A
Pilot flame gas Cost.(25day/M.)	940 THB.	N/A
Electric power (Watts) 8/H/day	N/A	10 W.
Electric Cost (Baht)/unit	N/A	4
Electric Cost total (THB/M.)	N/A	9.60 THB.
Total	940 THB.	9.60 THB.

* Diaphragm type Standard Gas Saver *



* Eco Saver PN-220 *



Agency